

# Norn Shawl Pattern

**3 Discs of Lopi Roving** (you can use 3 different colours or all one colour) This yarn is very fragile whilst you are working it. If it breaks, just overlap the strands and knit them together.

**5mm circular needle 80 or 100cm long**

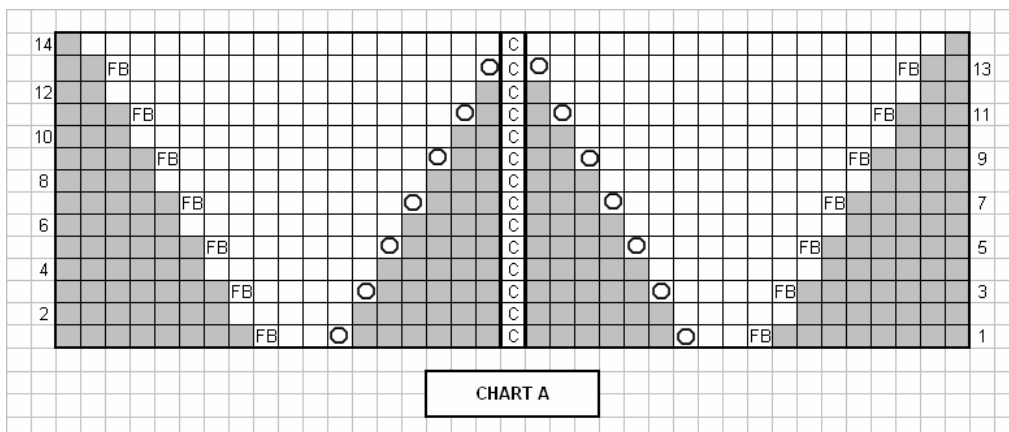
This pattern is actually a very simple lace pattern. Every even row is just plain knitting. All of the odd numbered rows include an increase at the beginning and end of the row by knitting into the front and back of the same stitch. There is also an increase before and after the centre stitch by using a yarn over. It is easier to keep track of where you are by placing a marker on either side of the centre stitch.

The pattern repeat in Chart B is always the same: knit 1, yarn over, knit 3, slip 1, knit 2 together, pass the slipped stitch over, knit 3, yarn over. The only variation is in how you deal with the increasing number of stitches on either side of the repeat.

<input type="checkbox"/>	knit on both RS and WS rows
FB	knit front and back of stitch
C	centre stitch
✓	k2tog = knit 2 together
↘	slip 1 stitch knitwise, knit 1 stitch, pass the slipped stitch over
○	yarn over
↻	slip 1 knitwise, k2tog, pass slipped stitch over
■	no stitch

## Pattern:

With Colour A Cast on 7 stitches, work 14 rows of Chart A



Work the 20 rows of Chart B five times. Change to Colour B, work the 20 rows of Chart B three times. Change to Colour C, work 20 rows of Chart B once. Work the 14 rows of Chart C one time and cast off all stitches. Soak finished shawl in cold water and squeeze out the excess water. DO NOT WRING OUT! Block flat and pin into shape.

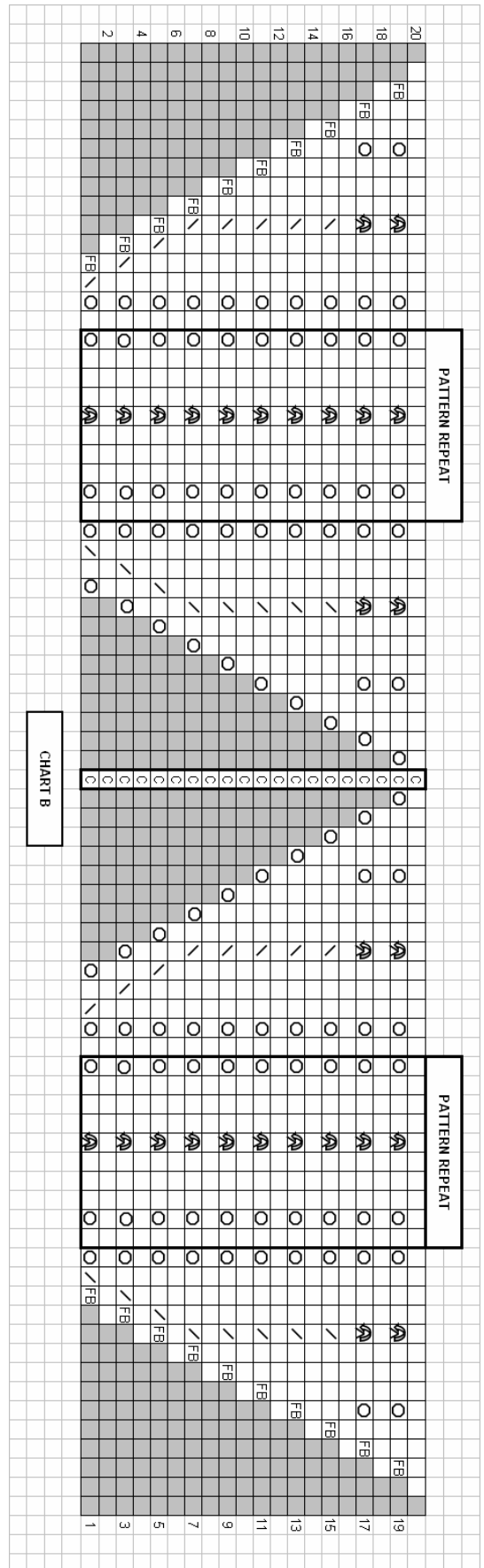


CHART B

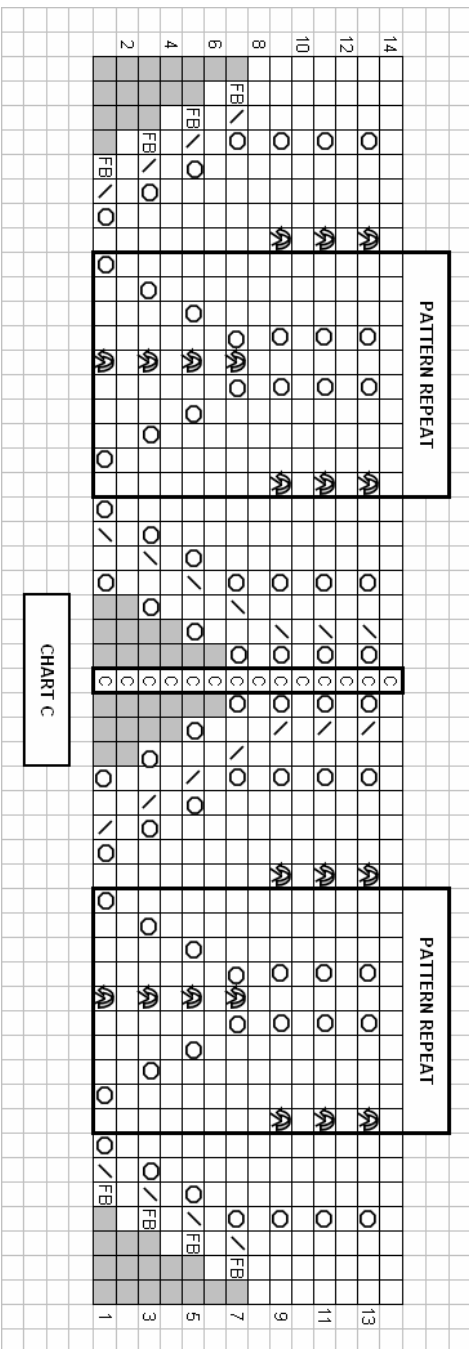


CHART C

twist fibre craft studio  
 88 High Street, Newburgh KY14 6AQ  
 01337 842843